

SMARTAIR PIPING

Towards **Your** Success



SMARTAIR PIPING: Advanced Piping Solution

Piping Size Up-to

$\frac{1}{2}$ " , $\frac{3}{4}$ " , 1" , 1.5" , 2" , 2.5" , 3" , 4" , 6"

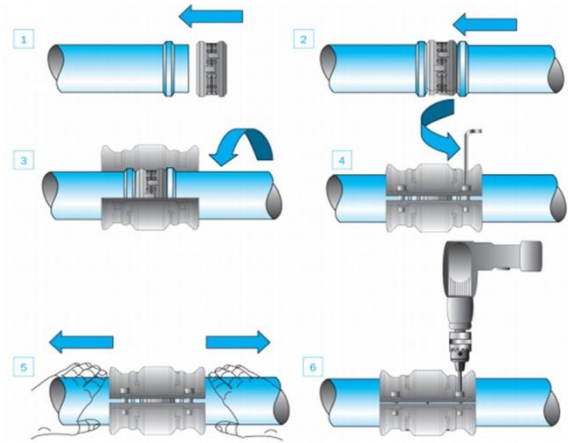


Complete Piping Solution

Features & Benefits:

- o Greatly corrosion - resistant capacity
- o High - quality
- o Energy - saving
- o Simple and fast installation
- o Escalating easily
- o Being reusable
- o Strong universality
- o Attractive and smooth
- o Strong applicability

Piping Installation Method



Piping Installation Kit



ALUMINIUM EXTRUSION-MATERIAL SPECIFICATION

Mechanical Properties		
Ultimate Tensile Strength	195 N/mm ²	30 KSI(min)
Proof Stress 0.2%	160 N/mm ²	25 KSI(min)
(%) Elongation (50mm)	7	7
Modules of Elasticity	69*10 ³ mPa	10.0*10 ³ KSI
Physical Properties		
Density	2.70*10 ⁻⁶ KG/MM	0.0975 lb/in ³
Melting Range	615 - 655 °C	1140 - 1210 °F
Specific Heat between 0°C-100°C	879 J/kgK	22*10 ⁴ BTU/lb°F
Coefficient of Linear Expansion between 20°C-100°C	23*10 ⁻⁶ /K	13.0*10 ⁻⁶ /°F
Electrical Resistance at 20°C	0.033 μΩm	0.033μΩm

Pressure		7 BAR			8 BAR			10 BAR			12 BAR			14 BAR		
(Diameter)		(103 PSIG)			(118 PSIG)			(147 PSIG)			(176 PSIG)			(203 PSIG)		
mm	inch	L/sec	M ³ /Min	SCFM	L/sec	M ³ /Min	SCFM	L/sec	M ³ /Min	SCFM	L/sec	M ³ /Min	SCFM	L/sec	M ³ /Min	SCFM
20	3/4"	34.9	2.1	74.0	38.7	2.3	82.0	42.9	2.6	91.0	/	/	/	/	/	/
25	1"	59.4	3.5	125.8	65.8	4.0	139.5	73.0	4.4	154.7	/	/	/	/	/	/
40	1.5"	112.8	6.7	239	125	7.52	265	138.7	8.32	294	151	9.05	320	162.8	9.76	345
50	2"	212.4	12.74	450	228.9	13.71	485	251	15.04	532	276	16.55	585	292.6	17.55	620
63	2.5"	391.7	23.5	830	420	25.19	890	467.7	28.05	991	509.7	30.58	1080	546	32.77	1157
80	3"	731	43.86	1549	777.8	46.67	1648	862.7	51.77	1828	951	57.06	2051	1028	61.71	2179
100	4"	1456.9	87.4	3086.6	1570.0	94.0	3326.6	1721.6	103.2	3649.0	1893.1	113.5	4012.5	2006.9	120.4	4252.6
150	6"	3770	226	7990	4008	240	8493	4490	269	9513	4887	293	10356	5247	315	1119